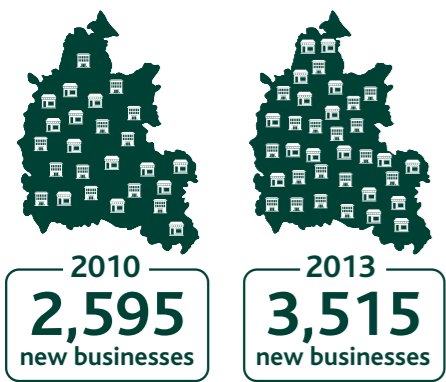


# Managing growth, protecting vulnerable people



## Fastest economic growth outside London\*

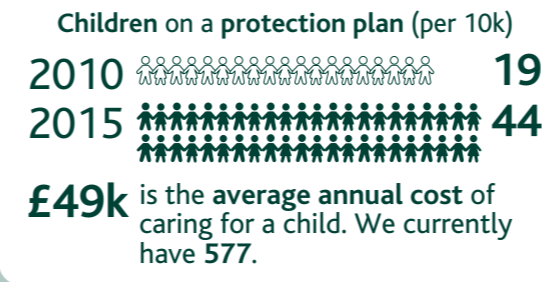


\*between 1997-2013  
ONS GVA figures

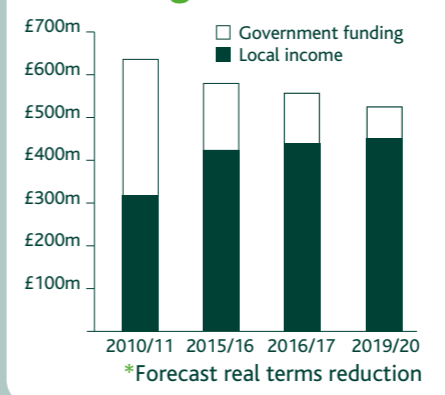
## Housing growth



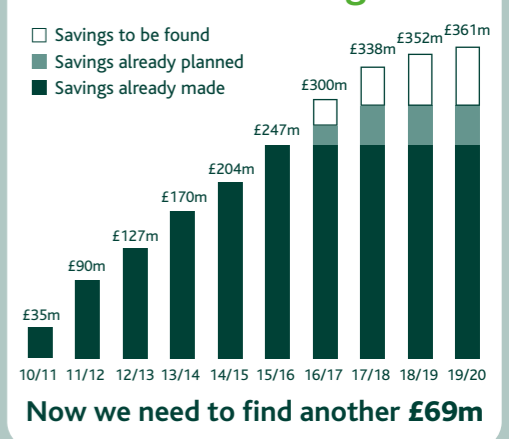
## More children need protection



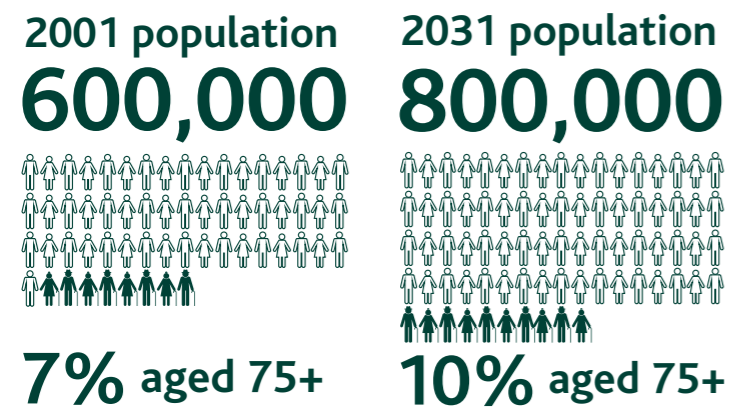
## Government funding and overall council budget reduce\*



## Ten years of council savings



## Growing and aging population



## Rising demand for adult care



## Health and care

**£330m** is spent jointly with the NHS

## Infrastructure

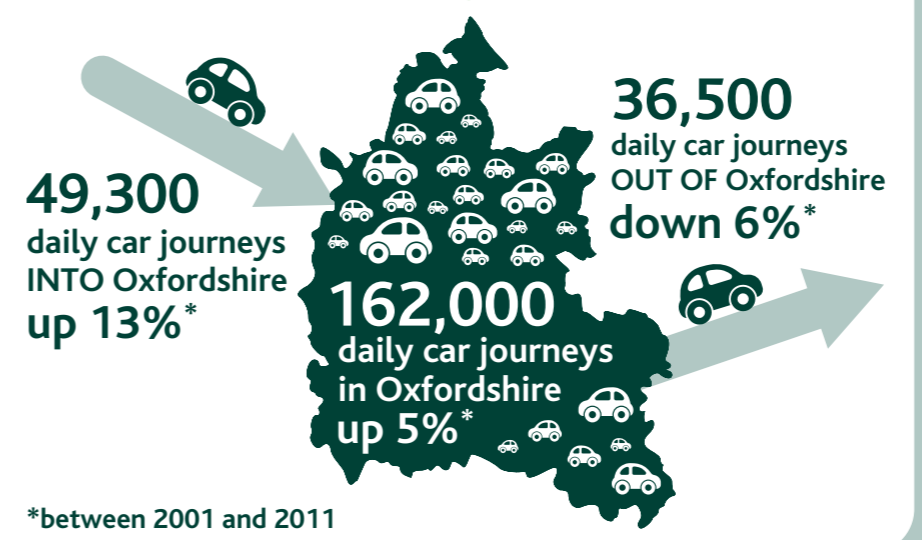
## Highway maintenance



## Connecting Oxfordshire



## Traffic growth



## Rising demand for care

